

# #TEAM MOORSIDE PARENT UPDATE



Dear Parents/Carers,

Students have been working incredibly hard again this week to earn positive praise points and golden tickets as we move closer to the Easter break and our rewards assemblies. Next Thursday, Year 7 to Year 10 will enjoy their celebration assemblies, and I'm certain there will be plenty of Easter Eggs handed out. Students will also take part in what has now become a much-loved tradition, huge drum rolls as the random Wheel of Fortune selects lucky winners.

During the assemblies, awards will be presented to students who have demonstrated our CARE values of Consideration, Aspiration, Resilience, and Equality, who have achieved strong positive praise points, and who have shown improvement in their attendance since last term. Year 11 will have their final celebration assembly in June as part of their leavers' events.

Another highlight this week is the long-awaited departure of staff and students heading off to Iceland. We wish them safe travels and a fantastic experience exploring the many sights on their packed itinerary.

We do recognise how important it is for parents and carers to have as much notice as possible about trips and visits. With this in mind, we are currently planning the trips we will offer next year and aim to publish a full trips and visits calendar during the summer term. This will give families a clear overview of the main opportunities available and help you plan which experiences your child would like to take part in. As a parent myself, I know how easy it is to commit to the first trip announced, only to discover a more suitable one later in the year—so we are working hard to improve the timeliness and organisation of our communication.

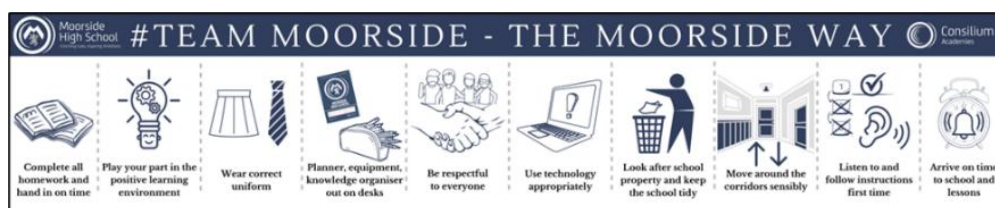
Finally, a gentle reminder that students finish at 14:55 on Thursday 2nd April for the Easter holidays and will return on Monday 20th April 2026, arriving on site by 08:25. There will be no parent update next Friday; instead, we will be sharing the Easter edition of Moorside News, our termly newspaper written and created entirely by our students. I am very much looking forward to reading it, and I'm sure you are too.

As always, if you have any concerns or thoughts you would like to share, please contact me at [MHSinfo@consilium-at.com](mailto:MHSinfo@consilium-at.com).

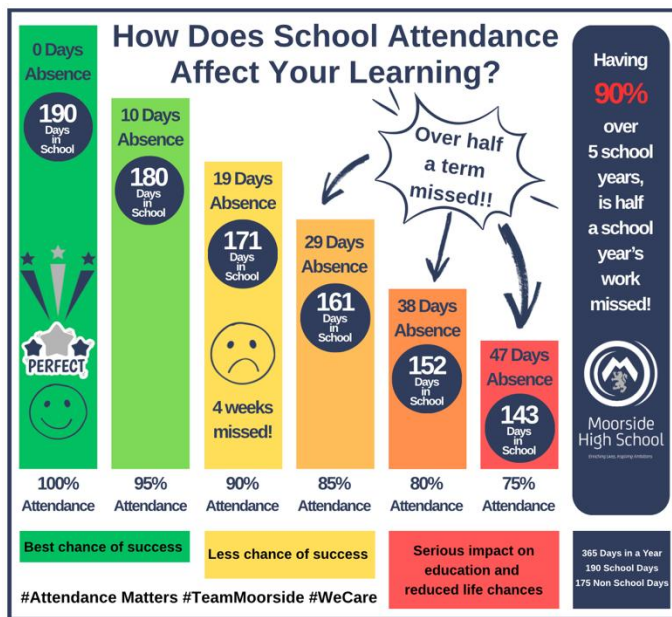
Thank you for your continued support. Wishing you a lovely weekend.

Have a lovely weekend.

Mrs H Ryles-Dean  
Principal



# Attendance Update:



As you know we are all working together to ensure that students are attending school and arriving on time. Thank you for your continued support in helping your children attend school regularly. We want to keep you informed about how attendance is looking this year and what this means as we head towards the summer term. Although attendance is slightly lower than this point last year, it has been steady and improving in recent weeks, which is really encouraging. Attendance in Years 7 and 9 is particularly strong. We have seen more students attending consistently in March and families have been quick to communicate when students are unwell or need support, so thank you.

## Where we still need your help:

Persistent absence (students missing 10% or more of school) is still too high. This is improving, but we want to reduce it further. You can help by:

- Encouraging good routines (bedtime, morning start)
- Booking appointments outside the school day where possible
- Speaking with us early if you're worried about attendance. We are here to help, not judge.

Your support makes a huge difference. When students attend regularly, they achieve more, feel happier in school, and build strong relationships with their peers. If you ever need help with attendance, please reach out, we can offer support, guidance, and practical solutions. Every Day Counts!!

## Squishy Toys

Recently, we have noticed an increase in students bringing "squishy" toys into school. While these items can be enjoyable, they have unfortunately begun to cause distractions during lessons and, in some cases, have burst causing damage to school property.

To help maintain a focused and positive learning environment for all students, we kindly ask that squishy toys are no longer brought into school.

If a student does bring a squishy toy, it will be confiscated and returned at the end of the school day. We appreciate your support in reinforcing this expectation with your child.



# Year 8 Parent/Carer Evening

## Thursday 30<sup>th</sup> April

We are pleased to let you know that our Year 8 Parent/Carer Evening will take place on Thursday 30<sup>th</sup> April, appointment bookings will open via the Arbor app on Monday 30<sup>th</sup> March. We encourage all parents/carers to secure their preferred times as soon as possible.

This evening is an important opportunity for you to meet with your child's subject teachers and discuss their progress so far this year. These conversations help to celebrate achievements, identify any areas where additional support may be helpful, and ensure that we are working together to support your child's academic and personal development.

As students begin to build towards the more demanding years ahead, maintaining strong communication between home and school is vital in helping them feel confident, supported and prepared.

If you experience any difficulties accessing the Arbor app or booking appointments, please contact the school via [MHSinfo@consilium-at.com](mailto:MHSinfo@consilium-at.com) and we will be happy to help.

## Change to the school day during the external exams.

Due to the external examinations requiring up to 2 hours in the afternoon, from Tuesday 5<sup>th</sup> May up until Friday 19<sup>th</sup> June the lunch/R time period will move earlier in the school day.

- Year 10 & 11 will have R time between 11:50-12:15, with lunch 12:15-12:55.
- Years 7, 8 & 9 will have lunch 11:50-12:30 followed by R time 12:30-12:55.

Students will then have lessons during period 4 (12:55-13:55) and period 5 (13:55-14:55) following the lunch period. We will be informing students in advance of the start date, to ensure they are all fully prepared and aware of the changes. Period 1 will continue to start at 08:30 with all students required on site from 08:25.

## DofE Activation session:

### Wednesday 1<sup>st</sup> April 3-4pm

Following the introductory assembly and initial expression of interest, students who have signed up are now invited to attend a DofE activation session on Wednesday 1<sup>st</sup> April from 3–4pm, and attendance is essential. During this session, students will be guided through the next steps of starting their Duke of Edinburgh's Award, including how to activate and use their online eDofE account, where they will plan their programme, select activities for each section (Volunteering, Physical and Skills), and track their progress. Parents will also receive a welcome pack via post with key information about the award, and students will be shown how to log in, set up their account, and begin outlining their chosen activities ready for approval by their DofE leader.

# Stress Awareness Month 2026 – How to support your child

April is Stress Awareness Month, a time to recognise the impact of stress and promote healthier ways to manage it. It is an annual event observed every April since 1992, dedicated to increasing public awareness about the causes, effects, and management of stress.

The theme this year is **#BeTheChange**, inspired by Gandhi's quote and focusing on proactive, small, and consistent actions to reduce stress for oneself and others. The campaign encourages normalizing conversations about mental health and addressing root causes to create more resilient communities.

As a parent, you can help your child develop positive coping strategies and create a supportive environment.

## How to Support Your Child

Children and teens may struggle to express stress, but open, judgment-free conversations can help. Ask questions like:

- “What’s been challenging for you lately?”
- “How can I support you when you feel overwhelmed?”
- Listening without immediately offering solutions allows them to feel heard and supported.

## Help Them Build Healthy Habits

Encourage small, daily habits to reduce stress:

- **Prioritise sleep** – A consistent bedtime routine improves emotional well-being.
- **Encourage movement** – Walks, sports, or stretching help release stress.
- **Take breaks** – Time away from screens and schoolwork allows them to reset.
- **Practice self-care** – Encourage activities they enjoy, like music, reading, or hobbies.

## Join the 30-Day Stress Awareness Challenge

Try a small daily activity in April to promote well-being, such as gratitude journaling, limiting social media, or spending time outdoors. Small changes can have a big impact on stress management.

## Where to Find Support

If your child needs extra support, these resources can help:

**Mind UK** – Mental health advice for young people and adults. Website: [www.mind.org.uk](http://www.mind.org.uk)

**Childline** – A confidential helpline for children. Call: 0800 1111 Website: [www.childline.org.uk](http://www.childline.org.uk)

**The Mix** – Support for people under 25 on various topics. Call: 0808 808 4994 Website: [www.themix.org.uk](http://www.themix.org.uk)

Supporting your child’s mental well-being starts with open conversations, encouragement, and leading with love.

SMALL ACTIONS, BIG IMPACT

#BeTheChange

[www.stress.org.uk](http://www.stress.org.uk)



# Teddy to Lead Derbyshire U13s!

We are delighted to share the fantastic news that Teddy in Year 8 has been selected to co-captain the Derbyshire U13s county side for the 2026 season.

This is an outstanding achievement and a testament to Teddy's dedication, teamwork, and passion for his sport.

Well done, Teddy! We are incredibly proud of you and cannot wait to follow your successes throughout the season.



## Teddy to Lead Derbyshire U13s!

Some exciting news to share from the junior section this evening, as youngster **Teddy Billingham** has been selected to co-captain his county side for the 2026 season!

The wicketkeeper-batter has worked hard on his game over the past 12 months and will now step up to lead his team in the coming months. This year will also see Teddy take his first steps into senior cricket at the club, as he joins up with our 3rd XI squad.

Congratulations, Teddy!

# National Maths Day 2026: Darts Tournament Success

To celebrate National Maths Day 2026, Mr Monk hosted an exciting darts tournament for students in Years 7–10. The event offered a lively and enjoyable way for students to put their numeracy skills into action, with a strong focus on mental maths, quick calculations, and strategic thinking.

Throughout the tournament, students competed with enthusiasm and demonstrated impressive sportsmanship and teamwork. It was fantastic to see so many pupils embracing the challenge and supporting one another.

A huge well done to everyone who took part, and a special congratulations to our House winners — **Pankhurst!**



# THE ANNUAL CONSILIUM AWARDS

## An Exciting Event – The Consilium Awards 2026

The Consilium Awards are a prestigious celebration recognising the students and staff who show our Trust values of Excellence, Integrity and Equity every day. This is a special opportunity to celebrate the hard work, dedication and achievements of those making a real difference in our school community.

Staff will be nominating students in the coming weeks for demonstrating our values. The student with the most votes from our school will be invited to attend the main Awards ceremony in July at Leeds Football Stadium, Elland Road, alongside winners from other schools in the Trust. The ultimate winners will be announced on the night!

It promises to be an inspiring and memorable evening, celebrating the outstanding contributions of our young people and staff across the region.



The Consilium Awards 2025  
The Consilium  
Team of the Year

FRIDAY 3RD JULY 2026

ELLAND ROAD FOOTBALL STADIUM, BEESTON, LEEDS, LS11 0ES

# Year 11 Apprenticeship information session

On Tuesday, we held an Apprenticeship Information session for Year 11 students who have expressed an interest in pursuing apprenticeships after Year 11. During the session, students were supported in registering on the National Apprenticeship website and shown how to begin searching and applying for suitable opportunities.

Mr Farmer also continues to support students through a weekly online forum, where he shares updates on newly available apprenticeship vacancies and provides useful guidance to help them stay informed and take the next steps. We would encourage parents and carers to take an active role in this process by exploring the website alongside their child, discussing potential opportunities, and supporting them with applications where possible.

## Lost Property

Due to limited space, anything not collected from our lost property area by the Easter Holidays will be taken to the local charity shop. Please can you encourage your child to check the Hub and the Mezzanine if they have lost anything. We do aim to return any items found if they have a name in, so please do name items.

## Safeguarding Update – Supporting Families through Early Help

At Moorside, we are committed to supporting not only our students, but also their families. One of the ways we do this is through the 'Early Help' process, which is designed to provide support as soon as concerns begin to emerge, before anything becomes more serious.

Early Help is a voluntary and supportive approach that brings together school staff, families, and the local authority to work collaboratively. It can support with a wide range of needs, such as attendance, emotional wellbeing, behaviour, family circumstances, or any challenges that may be impacting a young person's experience in school or at home.

The aim is to ensure that families receive the right support at the right time. By working together, we can create a clear plan of support tailored to each family's needs, helping to improve outcomes and provide stability for young people. This process is always carried out in partnership with you. Your voice is central, and any support offered is agreed together, with a focus on what will best help your child and family.

If you feel that your child or family may benefit from Early Help support, please do not hesitate to contact a member of our pastoral team. We will be happy to speak with you and help coordinate the appropriate support.

**For more information about Early Help services in Salford – including what support is available and how it works – please visit the official Salford City Council page here:**

<https://www.salford.gov.uk/children-and-families/early-help-for-families>



**Salford Family  
Partnership**

# WOW Wednesday

## WOW-STEM-Wednesday2

This week's iteration of WOW Wednesday was another STEM masterclass, with all the fabulous content coming from the books of Maths and Science. Mr Joynson was treated to some delightful work, with students collecting a prize, postcard and some valuable tokens as a reward for their efforts.

### Ding-Ding-Ding: Pankhurst-Pankhurst-Pankhurst

Another stunning display from the effervescent Team Pankhurst, who dropped the vast majority of the tokens this week to take an outright on-the-eye lead. They have set the benchmark in recent weeks, and it is now up Lowry, Joule and Egerton to respond

**Trigonometry: Length (Using Tangent)**

**Finding lengths: tan**  
learn by heart  
tan = opposite / adjacent

**example**  
Work out the missing side:  
? = opposite  
? = tan(37) \* 8  
? = 4.96 (2 d.p.)

**exercise 6j**  
1. Work out the missing length in each triangle. Find your answers jumbled at the bottom (rounded to 2 d.p.)

a) 8.10  
b) 8.90  
c) 4.55  
d) 11.5  
e) 11.73  
f) 8.64  
g) 7.71  
h) 12.8  
i) 4.10

Answers: 4.18cm, 11.7cm, 8.10cm, 7.71cm, 8.64cm, 4.38cm, 12.8cm, 8.59cm, 4.10cm

Wednesday, 25<sup>th</sup> March 2026

Games in the periodic table

**Periodical**

1. A piece of DNA ✓
2. To Bruce down the cell wall ✓
3. S ✓
4. Nucleus of female and males joining ✓
5. Oxygen ✓
6. A microorganism that causes harm ✓
7. Tobacco, HIV ✓
8. Because they have a full outer shell ✓

Work

**Group 1 - Alkali Metals**  
Reactivity increases down group 1

1. Francium is the most reactive element in group 1.
2. The least reactive element in group 1 is Lithium.
3. The order from most reactive to least reactive in group 1 is Francium, Caesium, Rubidium, Potassium, Sodium and Lithium.
4. The elements that are more reactive than Rubidium are Caesium and Francium.
5. The element that is more reactive than Potassium but less reactive than Caesium is Rubidium.
6. The element that is less reactive than Potassium but more reactive than Lithium is Sodium ✓

**Group 7 - Halogens**  
The reactivity decreases down the group because the electron in the outer shell is further away from nucleus making it harder to gain the electron because there are more shells (shielding)

1. The name of group 1 is Alkali Metals.

Monday 09<sup>th</sup> March 2026 #WOWWednesday

**Trigonometry: Calculating Angles**

**Periodical** build HOA and Pick Sin, Cos or tan = Tan ✓

2. Label H, O, A and then choose Sin, cos or tan = Sin ✓

3.  $5e^2 + 4e - 2e^2 + 2e = 3e^2 + 6e$  ✓

4.  $5.4 \times 100 = 540$  ✓

**SOH CAH TOA**

$\sin \theta = \frac{\text{Opp}}{\text{Hyp}}$      $\cos \theta = \frac{\text{Adj}}{\text{Hyp}}$      $\tan \theta = \frac{\text{Opp}}{\text{Adj}}$

1.  $\theta = \cos^{-1}(\frac{4}{6}) = 48.2$  ✓

2.  $\theta = \tan^{-1}(\frac{7}{8}) = 41.1$  ✓

Next Page

## Wider Curricular, Intervention and Exam Dates

Please [click here](#) to access the Wider Curriculum Timetable for Years 7-10.

The Year 11 Intervention/Study Sessions Timetable can be accessed by [clicking here](#).

All Summer GCSE Exam dates/times can be found on the school website or by [clicking here](#)

All term dates for the academic year, 26/27 can be found on the school website or by [clicking here](#)



[MHSYear7@consilium-at.com](mailto:MHSYear7@consilium-at.com), [MHSYear8@consilium-at.com](mailto:MHSYear8@consilium-at.com), [MHSYear9@consilium-at.com](mailto:MHSYear9@consilium-at.com),

[MHSYear10@consilium-at.com](mailto:MHSYear10@consilium-at.com), [MHSYear11@consilium-at.com](mailto:MHSYear11@consilium-at.com), [MHSAbsence@consilium-at.com](mailto:MHSAbsence@consilium-at.com)

Email: [MHSinfo@consilium-at.com](mailto:MHSinfo@consilium-at.com)

Twitter - @moorsidehigh

Instagram - moorsidehighofficial

**C**ONSIDERATION **A**SPIRATION **R**ESILIENCE **E**QUALITY



Moorside  
High School  
*Enriching Lives, Inspiring Ambitions*



# A Night At The Musicals



*A Spectacular Musical Showcase  
Highlighting the Finest Moorside  
Music, Dance, and Drama*



Tuesday 31 Mar 2026  
Wednesday 1 Apr 2026  
7:00PM

Performance Hall



Scan the QR  
code to purchase  
tickets



Proud to be part of  
Consilium  
Academies



# WORD OF THE WEEK

# EMPOWERMENT

**Antonyms:**

Disempower; disable

**Synonyms:**

Authorise; enable

**Connected Words:**

Empowered, Empowering

**British Values link:**

Rule of Law, Individual

**Noun:**

To give (someone) the authority or power to do something.

**Moorside focus:**

Consideration



**How do I say this in Spanish?** Empoderamiento

**Spanish phrase:** Necesitamos empoderar a nuestros estudiantes para que hagan lo correcto. We need to empower our students to do the right thing.

The students' empowerment led them to make great improvements for the school.



## SILENT REMINDER - STAYING SAFE OVER EASTER

With the Easter holidays approaching, it is important that we remember about being socially responsible in our local community! - Social responsibility is the awareness and commitment to act ethically and contribute to the well-being of society and the environment.

How can you be Socially Responsible!

- Make sure you treat everyone, even strangers with respect
- Be safe when crossing the road, use the pedestrian crossing or subway
- Be a positive role model to younger friends or family members
- Help out at home! Even if you just tidy your room or wash up
- Do a good deed... put the bins out, visit an elderly neighbour, make dinner!
- If meeting friends, don't hang out in large groups, it can be intimidating
- Ride your bike/scooter safely and wear a helmet
- Keep the environment tidy, do not leave litter



**Have a wonderful Easter, stay safe and do not eat too many Easter Eggs!!**



# ROYAL MAIL APPRENTICESHIP APPLICATIONS OPEN

## Engineering Apprenticeship – Royal Mail

📍 Manchester Mail Centre (M4 6BQ)

- 💰 £16,420 – £23,820 (age dependent)
- 🕒 40 hours per week | 📅 3–4 years
- 🔧 Level 3 Engineering Technician Apprenticeship

Earn while you learn and start your engineering career.

- 🔧 Work on mail sorting machines, conveyors and robotics
- 🔧 Learn to maintain and repair automated systems
- 🎨 Take part in design and 3D modelling projects
- 👥 Work with experienced engineers

🎓 College training includes:

- Electrical & mechanical engineering basics
- Health & safety regulations
- PLCs (Programmable Logic Controllers)
- Fault finding and repair



## Fleet Maintenance Apprenticeship – Royal Mail

📍 Warrington SC, Kerfoot Street (WA2 8NX)

🔧 Level 3 Vehicle Maintenance Apprenticeship

Start your career as a vehicle technician with one of the UK's largest fleets.

- 🔧 Learn to service, repair and maintain vehicles
- 🚐 Work on vans, HGVs and trailers
- ⚡ Gain experience with electric and alternative fuel vehicles
- 👥 Train alongside skilled technicians

Visit the website for further details:



# UNI:4U

## YEAR 10 SUMMER SCHOOLS



### **Building Tomorrow:**

#### **Construction, Engineering & Technology**

Stockport College

23 - 25 June

Non-residential

### **Wise Up**

University of Manchester

7 - 9 July

Residential

### **From Page to Stage**

University of Salford

8 - 10 July

Non-residential

### **Scientific You**

Manchester Met University

20 - 22 July

Residential

**TO APPLY VISIT**  
[gmhigher.ac.uk/uni4u](http://gmhigher.ac.uk/uni4u)  
(Applications close 6 April)

## WHY SHOULD YOU TAKE PART?

Our summer school programmes will give you the chance to:

- Scope out university life.
- Meet like-minded students from Greater Manchester.
- Level up your skills and boost your confidence.
- Take a deep dive into various courses and fields of study.
- Learn about different industries and the careers they can open up for you.
- Get crucial advice on making big moves post Year 11 and beyond.

Everything is free, including food and travel to and from school and we promise it's way more fun than your typical school day!

## Find out more

[gmhigher.ac.uk/uni4u](http://gmhigher.ac.uk/uni4u)

